

bremenports

REQUIREMENTS TO MULTIBEAM PROCESSING  
OF A PORT AUTHORITY



Thorsten Döscher

HYDRO2010, 3. November 2010

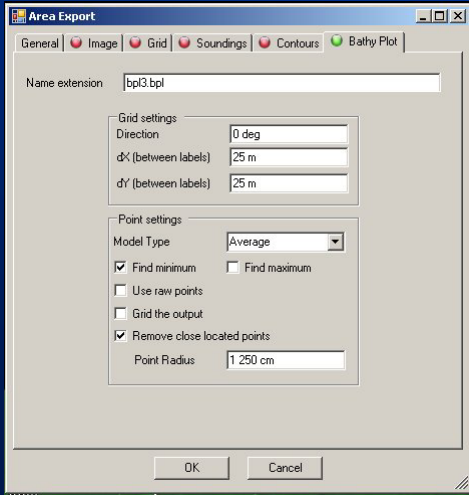
bremenports

Navigation      minimum  
                         depth ?

Dredging

Inspection

**bremenports**

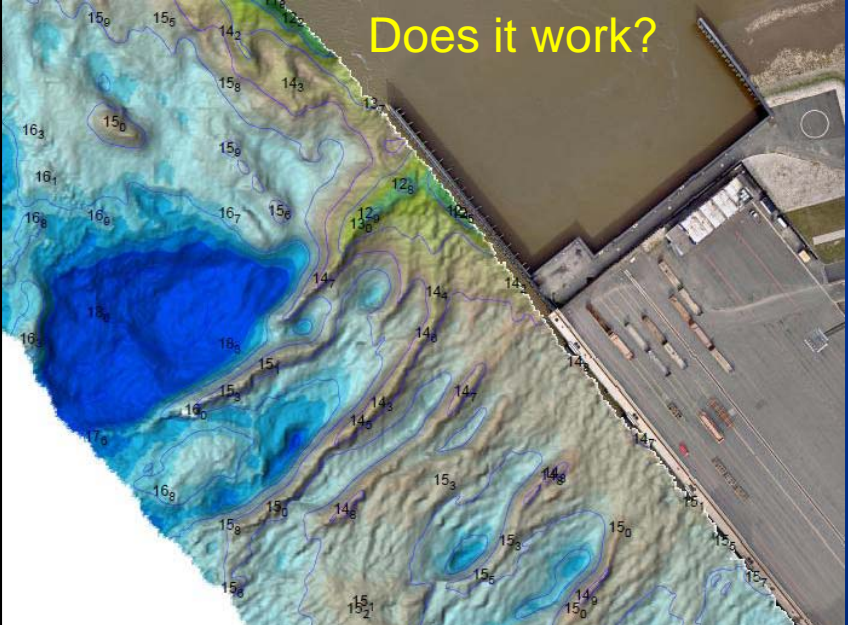


minimum definition:  
average depth of a  
2x2m grid cell

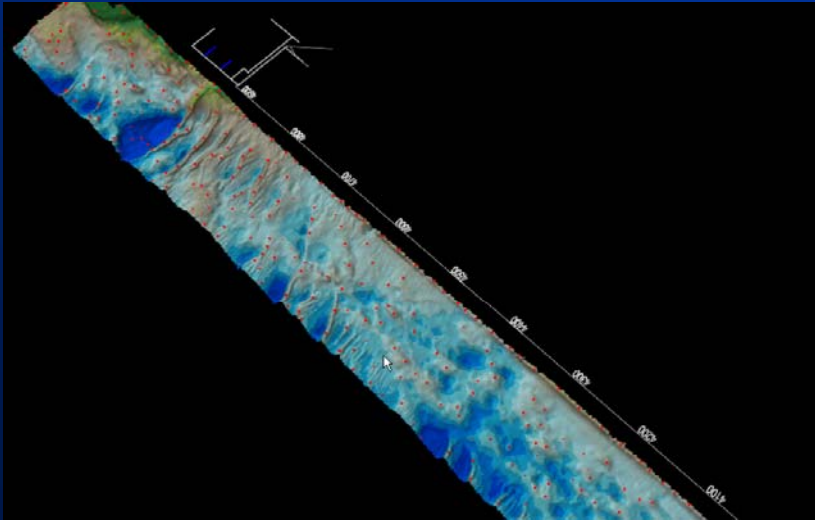
text label distance:  
scale factor / 100  
here: 25m

**bremenports**

Does it work?



# Does it really work?



# Dredge Chart

